



# 2014 GARDEN TOUR

## Meet Our Sponsors

---

\*Sponsor pages are from our 2014 Tour Ticket Booklet  
We thank our Sponsors for their help in supporting the projects  
and programs of the Lee County Master Gardeners Association.



*The Greystone  
Mansion*

*Weddings ♦ Receptions ♦ Special Events*

---

**334-740-0647**

---



**ALAN DORN**

334-444-8856  
alandorn@gmail.com  
www.alandorn.com  
*LEE COUNTY'S  
TOP AGENT  
2000-2012*



**ADAM DORN**

334-559-8450  
dornadam@gmail.com



**JORDAN  
TREE SERVICE**

**8 2 1 - 0 2 8 1**  
**7 4 0 - 4 6 6 8**

**Builders  
FirstSource**

# Blooming Colors



Shades for All Seasons



Supporting the Lee County Master Gardeners Tour since 2006

The Difference Between a Flower and a Weed is...  
*Judgement.*



Choose Your Garden Wisely.



Ashley Smith-Durham  
REALTOR®  
c: 334.559.8817



PRESTIGE  
PROPERTIES

*Where relationships nurture and flourish.  
We work hard to bring you home.*



Karen Turner  
REALTOR®  
c: 334.332.7005



[www.millwoodcottages.com](http://www.millwoodcottages.com)

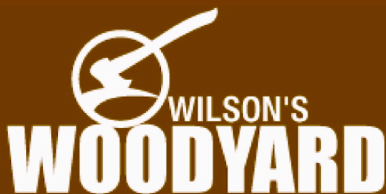


[www.thefairwaysauburn.com](http://www.thefairwaysauburn.com)

BEAUMONT



[www.beaumontauburn.com](http://www.beaumontauburn.com)



2411 Lafayette Parkway  
Opelika, AL 36801

(334) 749-3265

FIREWOOD • MULCH • PINE STRAW • STONE • TOP SOIL  
GARDEN CENTER • PLAY SAND & MORE • *We Deliver!*

## **We Love Our Friends!**

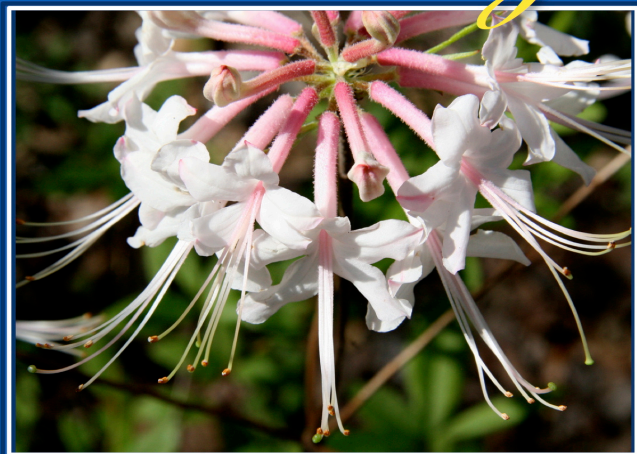
Check out our website, [www.LeeMG.org](http://www.LeeMG.org), and go to the “Friends” page to see how you can join and experience everyday fun & learning. We’ve added a new & easygoing group of members who want to meet local garden-minded people, go on field trips and help with projects. No class required.

Now, that’s friendly!

Hope you’ll join us!

**Lee County Master Gardeners**

## *Garden Delights*



**214 S. Main Avenue, Pine Mountain, GA 31822 (706) 663-7964**

***“The Largest Selection of Native Azaleas in the Southeast”***

*Austin & Linda Wade*  
1549 Woodley Circle

*Proud Participants and Sponsors of the  
Lee County Master Gardeners 2014 Garden Tour*

*We would like to thank the following for helping make our home and garden a  
pleasure for us to share with you this year:*

*Michael Dilworth  
Benji Sides  
King Braswell  
Ted Klose/Scotty Scott*

*Dilworth Development (Auburn)  
Dilworth Development (Auburn)  
Blooming Colors (Auburn)  
Ted "The Wine Guy" (Montgomery)*



Simply Shutters & Blinds



Free Estimates

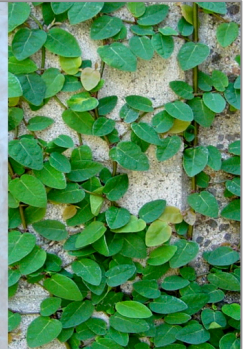
Office: (334) 514-0702 Fax: (334) 514-0774

Email: 4QUICKSERVICE@GMAIL.COM

Custom Interior Shutters • Custom Blinds • Solar Shades  
Roman Shades • Solar Window Film • Custom Mirror Framing

Wayne Sanders

Cell: (334) 799-4586



**DILWORTH**  
DEVELOPMENT, INC.



• **CUSTOM BUILDERS** •

Ph: 334-821-6610 • [www.dilworthdevelopment.com](http://www.dilworthdevelopment.com)



Billy and Nancy Cleveland

## PIEDMOUNT FERTILIZER COMPANY, INC.

MANUFACTURERS OF PEA FOWL FERTILIZERS

334-745-5734 • 334-745-5736



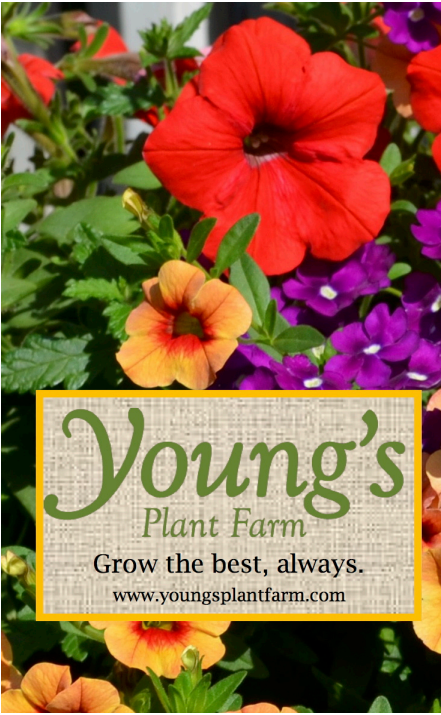
*Lee County Master  
Gardeners Association  
Garden Tour*

Auburn • Opelika  
[www.charterbank.net](http://www.charterbank.net)

Community Support?  
You Betcha!!

  
**CharterBANK**





# Young's Plant Farm

Grow the best, always.

[www.youngsplantfarm.com](http://www.youngsplantfarm.com)



More saving.  
More doing.™

2190 Tiger Town Parkway  
Opelika, AL 36801  
(334) 737-0136



- Landscape Design
- Edible Landscaping and Vegetable Garden Prep
- Outdoor Entertainment and Play Space
- Hardscapes
- Outdoor Lighting
- Irrigation and Drainage
- Create Privacy/Screening
- Patios
- Landscape Design

**Creative Habitats Landscaping**  
**334-525-5408**

[Designsbycreativehabitats@gmail.com](mailto:Designsbycreativehabitats@gmail.com)







**AUBURN BANK**

[www.auburnbank.com](http://www.auburnbank.com)

Member FDIC

**The Experience & Willingness  
To Make Your Dreams Come True.**

**(334) 821-9200**



**Fresh.  
Local.  
Light.**

[www.maestro2300.com](http://www.maestro2300.com)

**5pm - 10pm  
Tuesday - Saturday**



2300 Maestri Mill Rd. Auburn, AL 36830 | 334-821-4448 | [reservations@maestro2300.com](mailto:reservations@maestro2300.com)

# THANK YOU

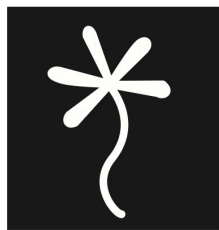
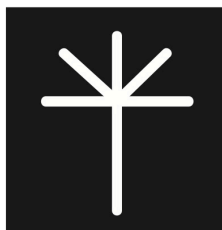
## 2014 GARDEN TOUR VOLUNTEERS

**Master Gardeners  
Our MG Friends & Community Volunteers**

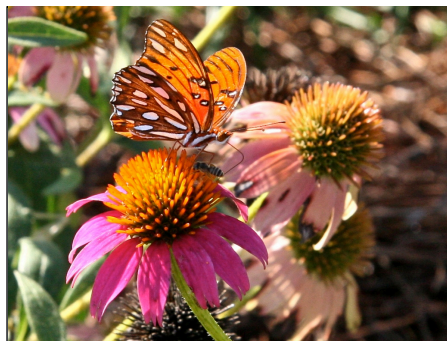


**This event is made possible by you!**

Visit the MG Website • [www.LeeMG.org](http://www.LeeMG.org)



# FLORA TERRA



*Whether relaxing in your home landscape or growing a garden of edible plants, working with nature is good for your health.*



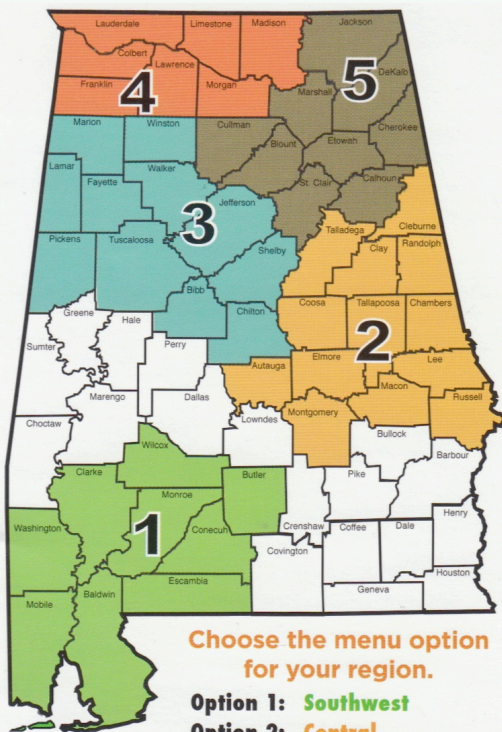
# Home Garden Questions?

We've got answers!

Call the

**Master Gardener Helpline**  
*toll free*

**1-877-252-GROW (4769)**



[www.aces.edu](http://www.aces.edu)

The Alabama Cooperative Extension System (Alabama A&M and Auburn Universities) in cooperation with the U.S. Department of Agriculture is an equal opportunity educator and employer.

# UNIVERSITY

# ACE

2101 East University Drive, Auburn • (334) 329-7100

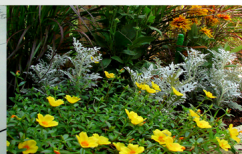
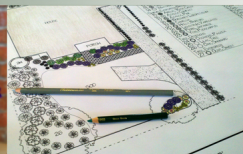


Full service company with three Auburn University horticulture graduates on staff.

Landscape services include:

- \*Design & Installation
- \*Irrigation
- \*Hardscape
- \*Maintenance
- \*Container Gardens

*Relax...*  
and leave the  
*rest* to us!



R&R Landscaping

(334) 524-6244

[rrlandscapes.com](http://rrlandscapes.com)

# Sincere Thanks to our Sponsors & Contributors

*Please show them your appreciation for helping make this tour possible.*

## Orchid Level

**Mary Ann Stiles**

---

## Camellia Level

**Ace Hardware \* Creative Habitats  
Flora Terra \* Garden Delights  
Jordan Tree Service \* Piedmont Fertilizer Company  
Prestige Properties \* R & R Landscaping**

---

## Daisy Level

**Alan Dorn/Keller Williams Realty  
Nancy & Billy Cleveland/Amsterdam Café  
Auburn Bank \* Blooming Colors  
Builders First Source \* Charter Bank  
Dilworth Development \* Home Depot  
Maestro 2300 \* The Flower Store  
Simply Shutters \* Linda & Austin Wade  
Wilson's Woodyard \* Young's Plant Farm**

---

## Contributors

**Judy & Tommy Chase \* Kelly & Brooks Cullen  
Christine & David Disque \* Sally Hill  
Keystone Bank \* Lowe's  
Anna & Bill Neville \* Melanie & John Shain  
Southern Lawns \* Nanci & Christopher Uher**